

ATLAS

Progressive Cavity Pump DOS SERIES



FDA **CE** **EAC**
APPROVED

AD
AlphaDynamic
PUMPS
We Make The Difference

BTS
ENGINEERING
<https://prom-nasos.pro>
<https://bts.net.ua>
<https://prom-nasos.com.ua>
+38 095 656-37-57,
+38 067 360-71-01,
+38 063 362-12-31,
info@prom-nasos.pro

INDEX

1. Safety	1
1.1. Instructions Manual	1
1.2. Startup Instructions	1
1.3. Warning Symbols	1
1.4. General safety instruction	1
1.4.1. During Installation	1
1.4.2. During Operation	2
1.4.3. During maintenance	2
1.4.4. Compliance with the instructions	2
1.4.5. Guarantee	3
2. General Information	3
2.1 System Design	3
2.2 Electrical	3
3. Installation	4
3.1. Pump Receipt	4
3.1.1 Pump Identification	4
3.3. Location	4
3.4. Pipes	5
3.5. Cut-off Values	5
3.6. Electrical Installation	5
3.7 Mechanical Seal	5
3.8 Dry Running	6
4. Start Up	6
4.1. Checks before starting up the pump.	6
4.2. Checks when starting up the pump.	6
5. Troubleshooting	7
6. Maintenance	8
6.1. General Information	8
6.2. Storage	8
6.3. Cleaning	8
6.3.1 Automatic CIP (cleaning-in-place)	9
6.3.2. Automatic SIP [sterilization-in-place]	9
7. Technical Specifications	10
8. Curves	11
9. Dimensions	13
10. Exploded View	14



Declaration of Conformity

in compliance with the Machinery Directive 2006/42/EC

We hereby declare, that the pump units manufactured in series production

Designation: ATLAS PROGRESSIVE CAVITY PUMP

Series: ATLAS DOS / HBM / SBM / CBM / WCM / WSM

Manufactured By : **AlphaDynamic PUMPS**

3 Elefterias str. - 14564 Industrial Park of Kifisia
HELLAS
Tel + 30 215 215 9580 -Fax +30 211 2686837
www.alphadynamic.eu

in the version delivered by us, are in compliance with the following applicable regulations:

EC Machinery Directive: 2006/42/EC

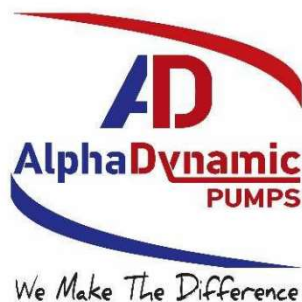
Harmonized standards: EN 809:1998+A1:2009 , DIN EN 60204-1:2006
EN ISO 12100:2010 , EN 13857:2008
EN 953:1997+A1:2009

Signature of authorized person

Date : 20/01/2022

Printed name of authorized person : Ing . Nikolaos Prodromidis

Title : Technical Manager



Declaration of Conformity

Manufactured By : **AlphaDynamic PUMPS**

3 Elefterias str. - 14564 Industrial Park of Kifisia
HELLAS
Tel + 30 215 215 9580 -Fax +30 211 2686837
www.alphadynamic.eu



Declares that the pump units manufactured in series production

Designation : ATLAS – Progressive Cavity pumps
Types : DOS, HBM – WSM Series
Sizes : 11.2 , 12.2, 15 , 21 , 31 , 38 , 45 , 53 , 63 , 76 , 22 , 32 , 42 , 52 , 62
Casing material : Stainless steel 316
Rotor : Stainless steel 316
Stator : EPDM - VITON
Other parts : Stainless steel 316
O-rings : EPDM - VITON

in the version delivered by us, are in compliance with the following applicable regulations:

- FDA CFR Title 21.177 FDA “ Rubber Articles intended for repeated use “

The plastic and elastomer articles or objects listed here are suitable for multiple contact with all food categories

The maximum permitted operating temperatures of the respective materials according to the operating instructions must not be exceeded

Signature of authorized person

Printed name of authorized person : Ing . Nikolaos Prodromidis

Date : 20/02/2021

Title : Technical Manager

1. Safety

1.1. Instructions Manual

This manual contains information about the receipt, installation, operation, assembly, disassembly and maintenance of the ATLAS DOS pump. The information published in the instruction manual is based on updated information.

1.2. Startup Instructions

This Instructions Manual contains essential and useful information for properly operating and maintaining your pump. Read these instructions carefully before starting up the pump; become familiar with the operation and use of your pump and follow the instructions closely. These instructions should be kept in a safe location near the installation.

1.3. Warning Symbols



Danger for persons in general



Electrical danger



Danger! Suspended load



Commitment to safety at the workplace



Danger of injury by rotating equipment parts



Danger! Caustic or corrosive agents



Danger to the correct operation of the equipment



Protective goggles requirement.

1.4. General safety instruction

Read this Instruction Manual carefully before installing the pump and starting it up.

1.4.1. During Installation



Never start up the pump before it has been connected to the tubing.



During the installation, all the electric work should be carried out by authorised personnel.

1.4.2. During Operation



NEVER touch the pump or the tubes during operation when the pump is being used to decant hot fluids or when it is being cleaned.



The pump contains moving parts. Never place your fingers inside the pump while the pump is in operation.



NEVER operate the pump with the suction and delivery valves closed.



NEVER spray the electrical motor directly with water. The protection standard for the motor is IP-55: Protection against dust and sprayed water.

1.4.3. During maintenance



NEVER dismantle the pump before the tubes have been emptied. Remember that some of the fluid will always remain in the pump housing (when no drainage is provided. Note that the pumped fluid may be dangerous or very hot. Consult the regulations in effect in each country for these cases.

Do not leave parts loose on the floor.



ALWAYS disconnect the pump from the power supply before starting maintenance work.

Remove the fuses and disconnect the cables from the motor terminals.

All electrical work should be carried out by authorised personnel.

1.4.4. Compliance with the instructions

Any non-fulfilment of the instructions may result in a risk for the operators, the environment and the machine, and may result in the loss of your right to claim damages.

This non-fulfilment may result in the following risks:

- Failure of important functions of the machines/ plant.
- Failure of specific maintenance and repair procedures.
- Possibility of electric, mechanical, and chemical risks.
- Will place the environment in danger due to the release of substances.

1.4.5. Guarantee

Any warranty provided shall immediately be cancelled and void ipso jure, and ATLAS DOS PUMPS shall be compensated for any product liability claim from third parties, if:

- the service and maintenance work were not carried out in accordance with the service
- instructions, or the repair work has not been carried out by our personnel or it has been conducted without our written authorization;
- our equipment has been changed without prior written authorization;
- the materials were used incorrectly or negligently, or not in accordance with these instructions and their intended use;
- pump parts were damaged by excessive pressure owing to the lack of a safety valve.



No change can be made to the equipment without prior discussion with the manufacturer. For your safety, please use original spare parts and accessories. The use of other parts will exempt the manufacturer from any liability.

2. General Information

2.1 System Design

At the system design stage, consideration must be given for the provision of filler plug and installation of non-return and *t* or isolating valves. ATLAS DOS PUMPS are normally installed in a horizontal position with base plates mounted on a flat surface, grouted in and bolted, thus ensuring firm fixing thereby reducing noise and vibration. If the pump is to be mounted in any other way, installation must be confirmed with AlphaDynamic SA.

2.2 Electrical

1. Electrical connection should only be made using equipment suitable for both rating and environment. Normally the pump should be installed with starting equipment arranged to give direct online starting to ensure maximum starting torque. When the motor is not being wired and checked for direction of rotation, ensure that the motor is not coupled with pump. **Make sure that the pump is full of liquid.** If any warning or control device is to be fitted on the electrical equipment it must be set in accordance with their specific instruction.
2. Protection of all electrical equipment should be ensured for minimum safety requirements as per environment and fluid being pumped in accordance with safety rules.
3. Earthing points of electrical equipment should be connected when the pump is fitted with electrical drives and it is essential that these were properly connected as per the electrical equipment manufacturer's catalogue.

3. Installation

3.1. Pump Receipt

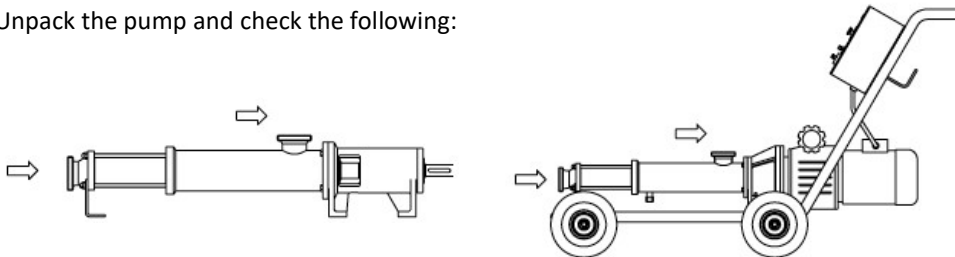


AlphaDynamic Pumps SA cannot be held responsible for any damage to the equipment during transport or unpacking. Visually check that the packaging is not damaged.

The pump will be accompanied by the following documents:

- Pump instructions and service manual

Unpack the pump and check the following:



- The suction and discharge connections of the pump removing any rest of packaging materials.
- The pump and the motor are not damaged.
- Check that the pump and the motor have not suffered any damage.
- If the equipment is not in good condition and/or any part is missing, the carrier should draw up a report accordingly as soon as possible.

3.1.1 Pump Identification

145 64 • Kifisia Industrial Park • Hellas www.alphadynamic.eu		CE EAC	
Model:	<input type="text"/>		
Serial No:	<input type="text"/>	Year:	<input type="text"/>
Q. max m ³ /h:	<input type="text"/>	P. max:	<input type="text"/>
T. max:	<input type="text"/>	Rpm:	<input type="text"/>
ALPHADYNAMIC PUMPS Co Manufacturer & Exporter of Industrial Pumps			

3.3. Location

Place the pump as close as possible to the suction tank, and if possible, below the fluid level. Place the pump to allow sufficient space around it to access the pump and the motor. (See chapter *Technical specifications for dimensions*).

Set up the pump on a flat, level surface.

Install the pump to allow sufficient ventilation.



If the pump is installed outdoors, it should be protected by a roof. Its location should enable easy access for any inspection or maintenance operations.

3.4. Pipes

As a general rule, fit the suction and discharge pipes in straight sections with the least possible number of bends and accessories to reduce as much as possible any loss of load caused by friction. Make sure that the nozzles of the pump are properly aligned to the pipe and their diameter is similar to that of the pump connections. Place the pump as close as possible to the suction tank, if possible, below the fluid level, or even below the tank, so that the manometric head of the static suction is highest. Place pipe supports as close as possible to the suction and discharge nozzles of the pump.

3.5. Cut-off Values

The pump can be isolated for maintenance purposes. To this end, shut-off valves should be fitted to the pump's suction and delivery connections.

These valves should **ALWAYS** be open when the pump is operating.

3.6. Electrical Installation



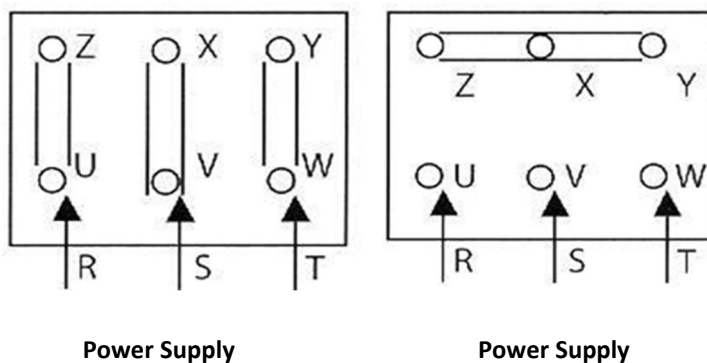
The connection of the electrical motors must be performed by qualified personnel.

Take all necessary measures to prevent damage to connections and cables.



The electrical equipment terminals and components of the control systems may still contain electric current when switched off. Contact with them may be dangerous for operators or cause irreversible damage to the equipment.

Before opening the pump, make sure that the electrical circuit is switched off. Connect the motor following the manufacturer's instructions.



3.7 Mechanical Seal

When the pump is supplied with mechanical seal it may be necessary to ensure proper flushing, quenching arrangement as per the seal manufacturer's recommendation.

3.8 Dry Running

Pump must be filled with liquid before starting (A threaded plug has been provided on top of the pump housing for this purpose). The initial filling is not for priming purpose, but to provide the necessary lubrication of the stator until the pump primes itself. When the pump is stopped, sufficient liquid is normally trapped between the pump elements to provide the necessary lubrication for restarting. If, however, the pump has been left standing for an appreciable time or has been dismantled, it must be filled with liquid and given a few turns before starting to get sufficient lubrication between rotor and the stator.

NEVER RUN THE PUMP IN A DRY CONDITION EVEN FOR A FEW ROTATIONS OR THE STATOR WILL GET DAMAGED IMMEDIATELY.

4. Start Up

4.1. Checks before starting up the pump.

- Fully open the shut-off valves on the suction and delivery pipes.
- If the fluid does not flow into the pump, prime the pump with fluid to be pumped.



The pump must NEVER be run dry.

4.2. Checks when starting up the pump.

- Check that the pump is not making any unusual noises.
- Check whether the absolute inlet pressure is enough to avoid cavitation in the pump.
- Check the flow pressure.

Check that there are no leaks through the sealed areas.



A cut-off valve on the suction pipe must not be used to regulate flow. Shut-off valves must be fully open during operation.



Check the motor's power consumption to avoid electric overload.

5. Troubleshooting

The following table provides solutions to problems that might arise during pump operation. The pump is assumed to have been properly installed and correctly selected for the application. Please contact the manufacturer or distributor if you require technical assistance.

Operation problems	Probable causes
Motor overload	8,9,13,19
The pump does not provide enough flow of pressure	1,2,4,5,7,9,10,16,17,18
No pressure on the discharge side	2,3,6,17
Uneven discharge flow pressure	1,2,4,5,6,9,20
Noise and vibration	2,4,5,6,7,8,9,10,13,14,18,19
The pump gets clogged	9,10,14,19
Overheated pump	8,9,10,14,19
Excessive wear	4,5,10,14,18
The mechanical seal leaks	11,12,15

No	Probable causes	Solutions
1	Wrong direction of rotation	Reverse the direction of rotation
2	NPSH is not high enough	Increase the available NPSH
		Place the suction tank higher
		Place the pump lower
		Reduce steam pressure
		Increase the diameter of the suction pipe
		Shorten and simplify the suction pipe
3	Pump not drained	Drain or fill
4	Cavitation	Increase suction pressure (see also 2)
5	Air is suctioned by the pump	Check the suction pipe and all its connections
6	Clogged suction pipe	Check the suction pipe and all its filters if any
7	Discharge pressure too high	If necessary, reduce load losses, e.g., by increasing the diameter of the pipe
8	Flow too high	Reduce speed
9	Fluid viscosity too high	Reduce the viscosity e.g., by heating the fluid
10	Fluid temperature too high	Reduce the temperature by cooling the fluid
11	Mechanical seal damaged or worn out	Replace the seal
12	O-rings unsuitable for the fluid	Fit suitable orings

No	Probable causes	Solutions
13	Stressed pipes	Connect the pipes to the pump to avoid stress and align the coupling
14	Foreign matter in the fluid	Fit a filter to suction pump
15	The mechanical seal tension is too low	Adjust according to the instructions of this manual
16	Pump speed too low	Increase speed
17	Pump too small	Choose a larger pump size
18	The stator is worn out or has operated in vacuum	Replace the stator
19	Pump and/or motor not attached to the bedplate	Attach the pump and/or motor and check whether the pipes are connected without stress
20	Flow reduction	Replace the worn stator



If the problems persist, stop using the pump immediately. Contact the pump manufacturer or their representative.

6. Maintenance

6.1. General Information

Like any other machine, this pump requires maintenance. The instructions contained in this manual cover the identification and replacement of spare parts. The instructions have been prepared for maintenance personnel and for those responsible for the supply of spare parts.



All replaced material should be duly eliminated/recycled according to the directives in effect in the area.



ALWAYS disconnect the pump from the power supply before undertaking maintenance work.

6.2. Storage

The pump must be completely emptied of fluid before storage. If possible, avoid exposing the components of the pump to excessively damp environments.

6.3. Cleaning

Manual cleaning



The use of aggressive cleaning products such as caustic soda and nitric acid may give rise to skin burns. Use rubber gloves during the cleaning process.



Always use protective goggles.

6.3.1 Automatic CIP (cleaning-in-place)

If the pump is installed in a system fitted with a CIP process, there will be no need for stripping. The recommended minimum liquid speed for an effective process of cleaning is 1,8 m/s (minimum $Re > 100000$ at 1,0-2,5 bar). If it is not fitted with an automatic cleaning process, strip the pump pursuant to the instructions given in the section entitled Stripping and Assembly of the pump.

Cleaning solutions for CIP processes

Only use clear water (chloride free) to mix with cleaning agents:

- a) Alkaline solution 1% in weight of caustic soda (NaOH) to 70C
1 kg NaOH +100 water-cleaning solution
2.2 lt NaOH al 33% or +100 lt of water = cleaning solution
- b) acid solution 0.5% in weight of nitric acid (HNO₃) to 70C
0.7 liters HNO₃ to 53% +100 water = cleaning solution



Monitor the concentration of cleaning solutions, it could give rise to the deterioration of the pump sealing gaskets.

To remove any remains of cleaning products, ALWAYS rinse the element in question with clean water after completing the cleaning process.

6.3.2. Automatic SIP [sterilization-in-place]

The process of sterilization with steam is applied to all the equipment including the pump.



Do NOT start the pump during the process of sterilization with steam. The parts/materials suffer no damage if the indications specified in this manual are observed.



No cold liquid can enter the pump till the temperature of the pump is lower than 60°C (140°F).

A flow by-pass is recommended to be used to assure the flow of sterile product after the pump.

Maximum conditions during the SIP process with steam or overheated water

- a. Max temperature: 140°C
- b. Max time: 30 min
- c. Colling: sterile air inert gas

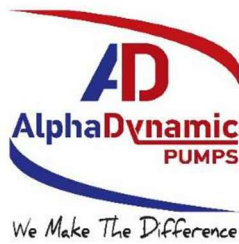
For CIP and SIP process, the pump must be stopped and must have a third connection to be put in a cleaning unit.

7. Technical Specifications

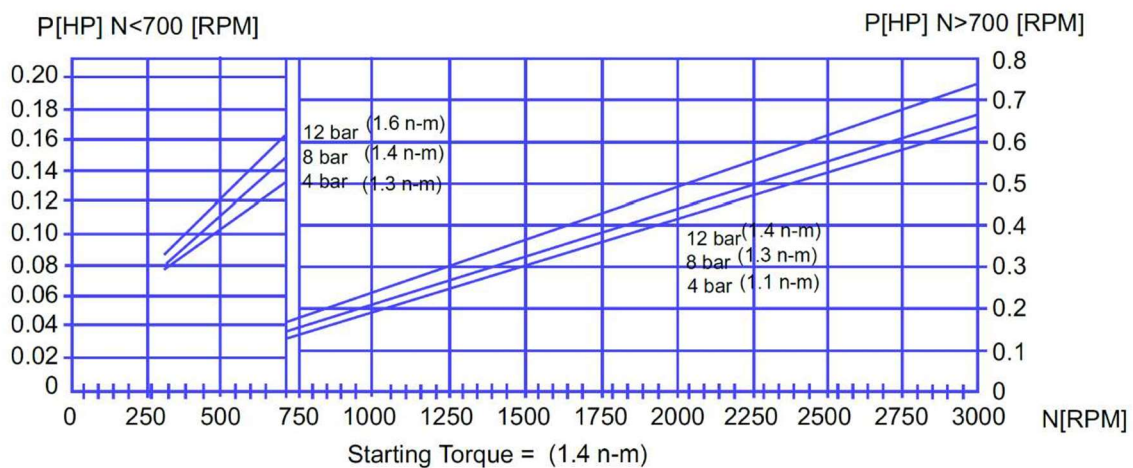
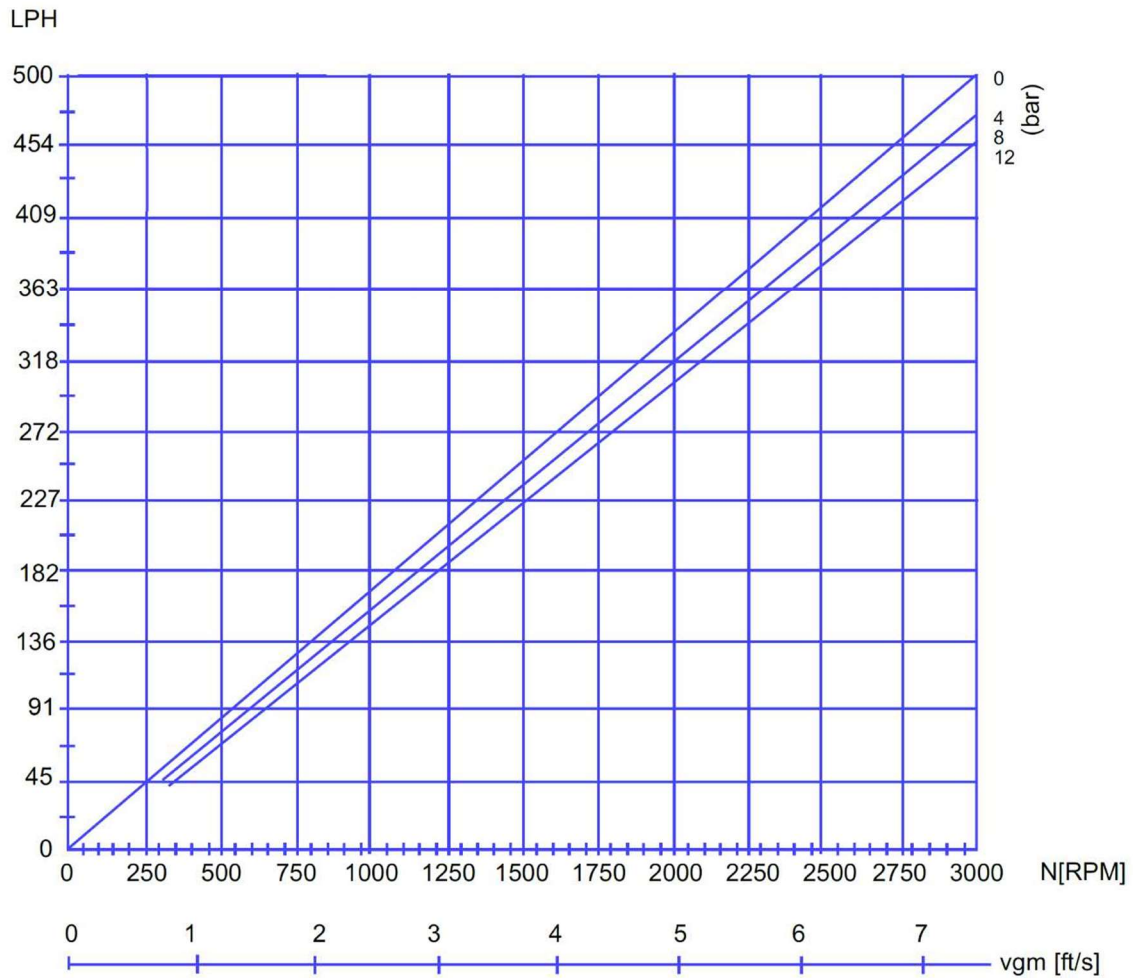
Maximum viscosity	1.000.000 mPa.s
Maximum working pressure	12 bar
Maximum temperature	100°C
Noise Level	60-80dB(A)
Suction/Discharge connections	DIN 11851 / BSP F

Materials	
Parts in contact with the product	AISI316L
Stator	NBR, EPDM, VITON, HYPALON
Mechanical seal	SIC/SIC/VITON, EPDM, NBR

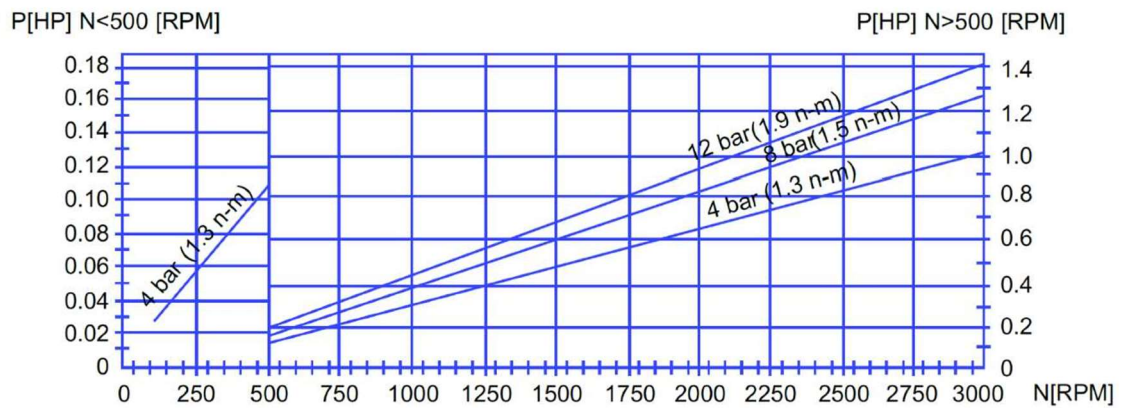
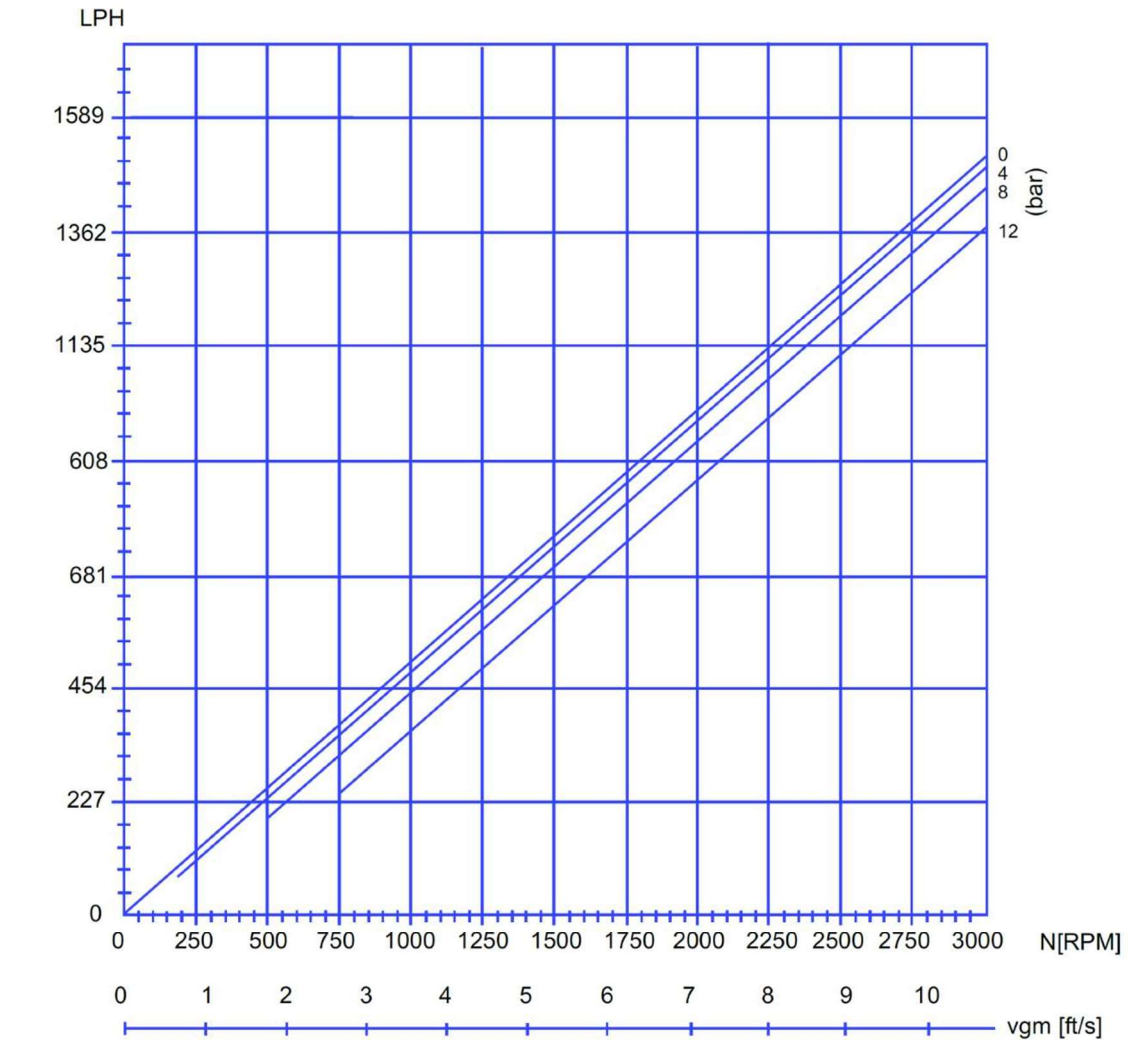
8. Curves



PERFORMANCE CURVES ATLAS 11.2

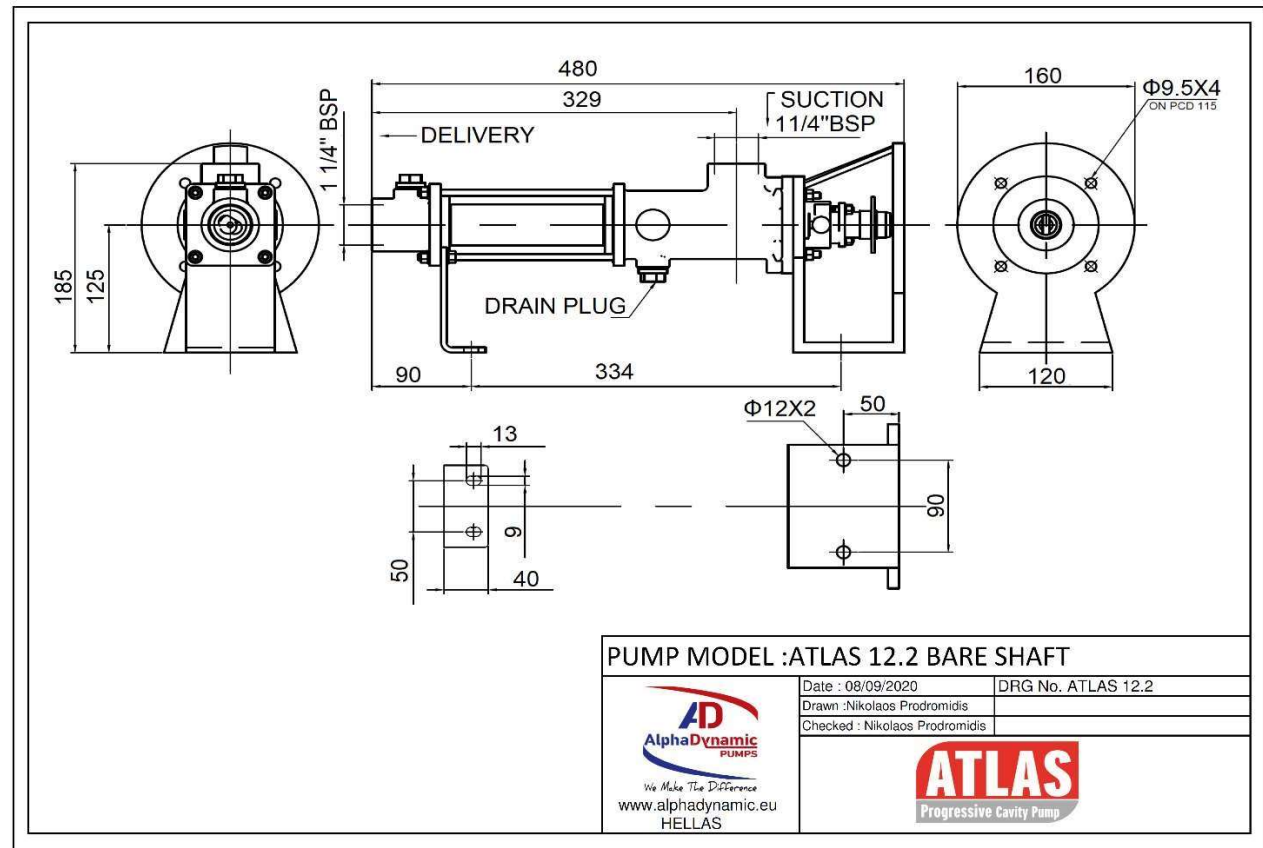
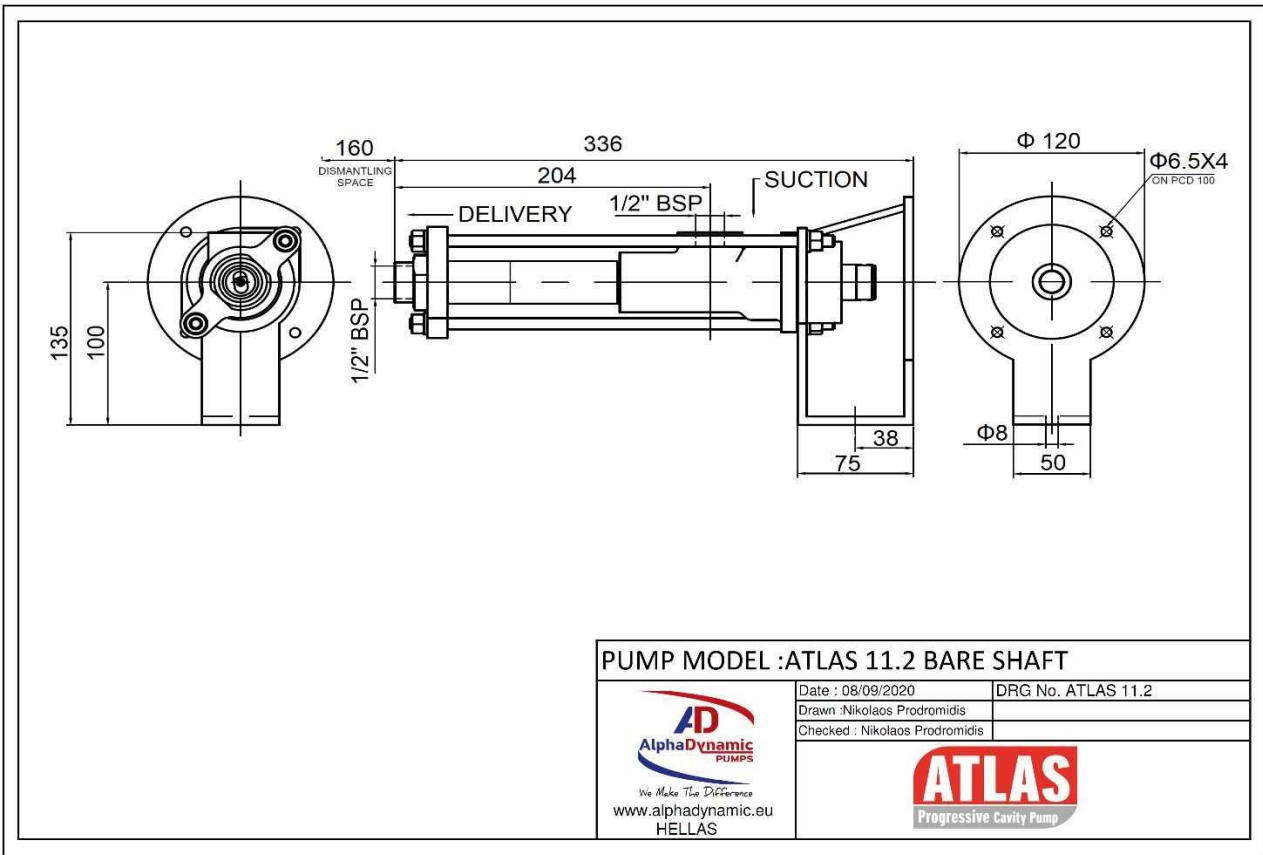


PERFORMANCE CURVES ATLAS 12.2



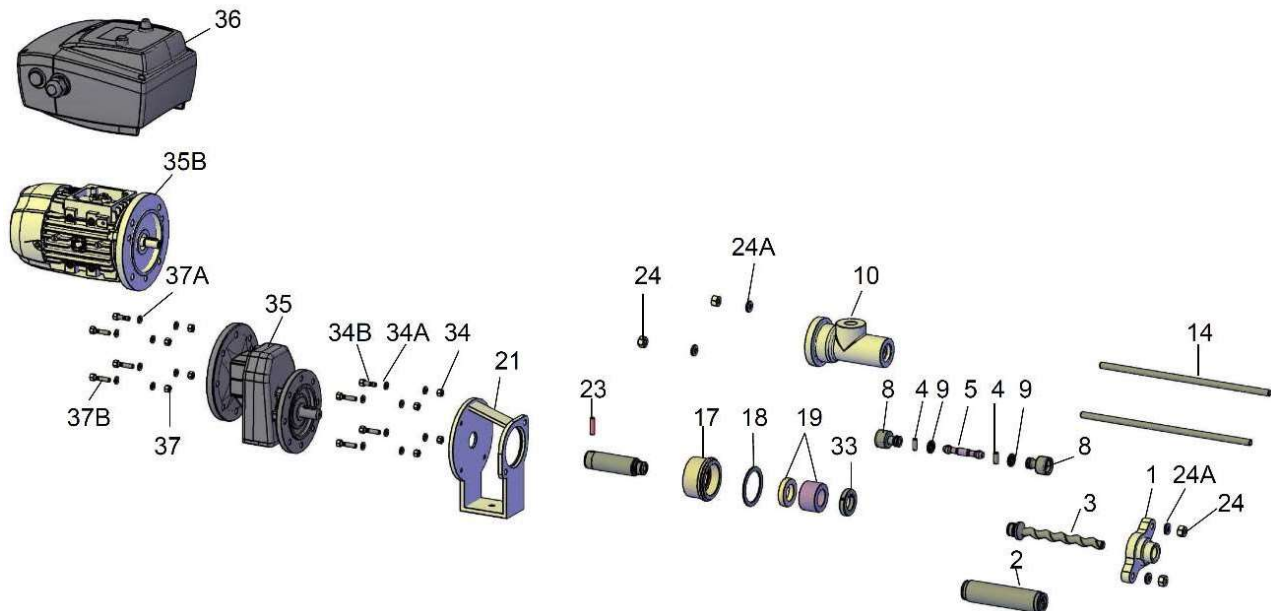
Starting Torque = (1.72 n-m)

9. Dimensions



10. Exploded View

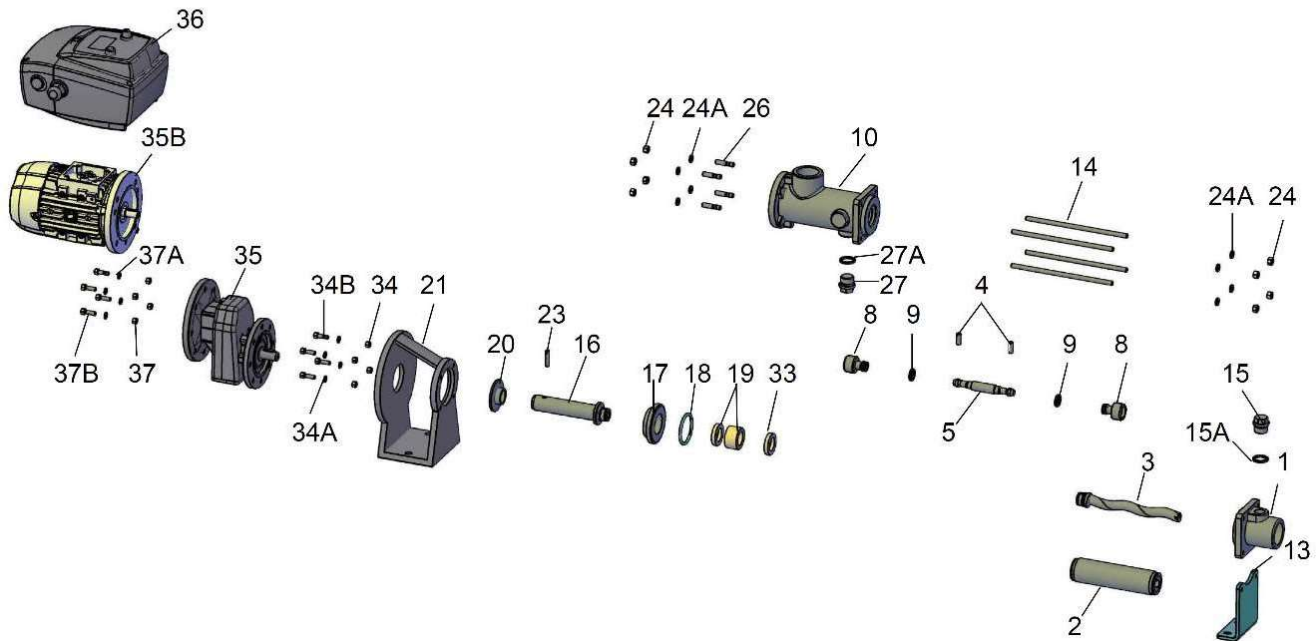
ATLAS DOS 11.2 Spare Part List Drawing



Pos	Description	Req. Qty
1	PORT	1
2	STATOR	1
3	ROTOR	1
4	COUPLING ROD PIN	2
5	COUPLING ROD	1
8	BOOT SEAL	2
9	BOOT SEAL RETAINING RING	2
10	PUMP HOUSING	1
14	TIE ROD	2
16	STUB SHAFT	1
17	SEAL HOUSING	1
18	SEAL HOUSING ORING	1
19	MECHANICAL SEAL	1
21	BRACKET	1

Pos	Description	Req. Qty
23	SHAFT PIN	1
24	NUT	4
24A	WASHER	4
33	STATOR SUPPORTING RING	1
34	BOLT	4
34A	WASHER	4
34B	SCREWS	4
35	GEAR	1
35B	MOTOR	1
36	FREQUENCY CONVERTER	1
37	BOLT	4
37A	WASHER	4
37B	SCREWS	4

ATLAS DOS 12.2 Spare Part List Drawing



Pos	Description	Req. Qty
1	PORT	1
2	STATOR	1
3	ROTOR	1
4	COUPLING ROD PIN	2
5	COUPLING ROD	1
8	BOOT SEAL	2
9	BOOT SEAL RETAINING RING	2
10	PUMP HOUSING	1
13	END SUPPORT	1
14	TIE ROD	4
15	PLUG	1
15A	ORING	1
16	STUB SHAFT	1
17	SEAL HOUSING	1
18	SEAL HOUSING ORING	1
19	MECHANICAL SEAL	1
20	PROTECTION COVER	1

Pos	Description	Req. Qty
21	BRACKET	1
23	SHAFT PIN	1
24	NUT	8
24A	WASHER	8
26	STUDS	4
27	PLUG	1
27A	ORING	1
33	STATOR SUPPORTING RING	1
34	BOLT	4
34A	WASHER	4
34B	SCREWS	4
35	GEAR	1
35B	MOTOR	1
36	FREQUENCY CONVERTER	1
37	BOLT	4
37A	WASHER	4
37B	SCREWS	4

ATLAS

AlphaDynamic Pumps
Industrial Park of Kifisia-HELLAS

